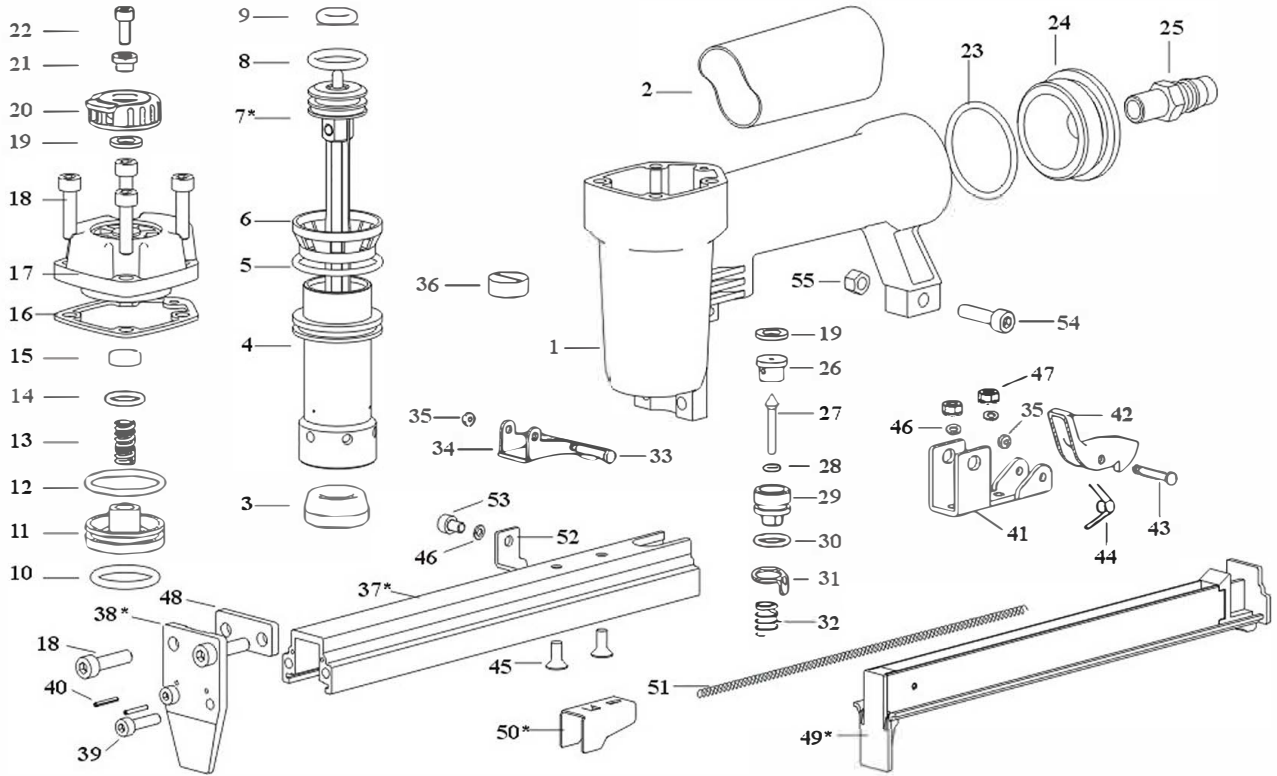


**SPECIFICATIONS AND TECHNICAL DATA**

**SWIFT80**

<b>Product Number</b>	<b>SWIFT80</b>	<b>7116/7216/1416</b>	<b>Fine Wire Stapler</b>						
<b>Height</b>	<b>168mm</b>								
<b>Width</b>	<b>45mm</b>								
<b>Length</b>	<b>230mm</b>		<b>Staple</b>	8016	7116	7216	1416		1314
<b>Weight</b>	<b>0.9KG</b>		<b>Crown</b>	12.7	9.1	12.4	10.1		10.5
<b>Operating Pressure</b>	<b>0.40 to 0.70 MPa (60 to 100 PSI)</b>		<b>Thickness</b>	0.70	0.55	0.55	0.55	0.55	
<b>Loading Capacity</b>	<b>150 Staples</b>	<b>180 Staples</b>	<b>Width</b>	0.90	0.75	0.75	0.75	0.75	
<b>Accessories</b>	<b>Hex. Bar wrench</b>		<b>Gauge</b>	21	22	22	22	22	



Index	Description	Code	Index	Description	Code	Index	Description	Code		
1	Main Body	A216801	22	Hex Bolt M4*10	E4604010	39	Hex Bolt M4*14	E4604014		
2	Rubber Handle	A216904	23	O-Ring 33.6*2.6	E01336260	40	Spring Pin 1.5*10	E2701510		
3	Bumper	A202213	24	End Cap	A216905	41	Bracket	A216712		
4	Cylinder	A216201	25	Air Plug	E02111	42	Magazine Hook	A216710		
5	O-Ring 30.3*2.5	E01303250	26	Valve Head	A101503	43	Stepped Pin	A130706		
6	Collar	A202202	27	Valve Stem	A101502	44	Spring	A216711		
7*	Driver assembly	8016	A216002	28	O-Ring 3.6*1.5	E01036150	45	Screw M4*10	E1304010	
		7116	A217002	29	Valve Guide	A101501	46	Spring Washer	E22040	
		7216	A223002	30	O-Ring 10.5*1.9	E01105190	47	Hex.Nut M4	E08040	
		1416	A222002	31	Safety	A216907	48	Spacer	A216903	
		1314	A237002	32	Spring	A101902				
8	O-Ring 17.3*3	E01173300	33	Stepped Pin	A001903	49*	Slider cover	8016	A216007	
9	Bumper	A202302	34	Trigger	A001901			7216	A217005	
10	O-Ring 21.2*2.8	E01212280	35	Rubber Ring	A001904			1416	A222006	
11	Valve	A202301	36	Nozzle	A216902			1314	A237008	
12	O-Ring 26.7*2.3	E01267230	37*	Magazine	8016	A216703	50*	Pusher	8016	A216704
13	Spring	A202303			7116	A217702			7116	A218704
14	O-Ring 11.7*2	E01117200			7216	A223703			7216	A223704
15	Head Seal	A216301			1416	A222701			1416	A222703
16	Cylinder Seal	A216407			1314	A237703			1314	A237704
17	Cylinder Cap	A216401	38*	Driver Guide	8016	A216702	51	Spring	A202711	
18	Hex Bolt M5*20	E4605020			7116	A217701	52	Stopper	A216701	
19	Seal	A101504			7216	A223702	53	Hex.Bolt M4*8	E4604008	
20	Exhaust Cover	A216404			1416	A222702	54	Hex.Bolt M5*22	E4605022	
21	Washer	A216402			1314	A237701	55	Hex.Nut M5	E08050	



For sales, service and spare parts

[www.apm-mouldings.com.au](http://www.apm-mouldings.com.au)

APM Mouldings 120-130 Bolinda Rd Campbellfield, VIC 3061  
Ph: 03 8301 9199 | Fax 03 9357 4077 | Email [apmoffice@chamton.com](mailto:apmoffice@chamton.com)  
[www.apm-mouldings.com.au](http://www.apm-mouldings.com.au)

Australian Owned Family Company  
Quality Moulding Manufacturers and Distributors



FOR ORDERS  
Available 24/7

